

A SKETCH OF EGYPTIAN CHRONOLOGY

Prehistoric Period Before 3200 B.C.

The Old Kingdom ca. 3200-2280

Archaic period (dynasties 1-3): ca. 3200-2680

Pyramid period (dynasties 4-6): ca. 2680-2280

First Intermediate Period

dynasties 7-10: ca. 2280-2060

The Middle Kingdom

dynasties 11 and 12: ca. 2060-1785

Second Intermediate Period

dynasties 13-17: 1785-1580

The New Kingdom 1580-1085

dynasty 18: 1580-ca. 1340

dynasty 19: ca. 1340-1200

dynasty 20: 1200-1085

Third Intermediate Period

dynasties 21-25 1085-663

The Saïtic Kingdom 663-525

Egypt a Persian Province 525-332 (including native dynasties 27-30)

Egypt under Ptolemaic Rulers 332-30

Egypt under Roman Rule 30 B.C.-A.D. 324

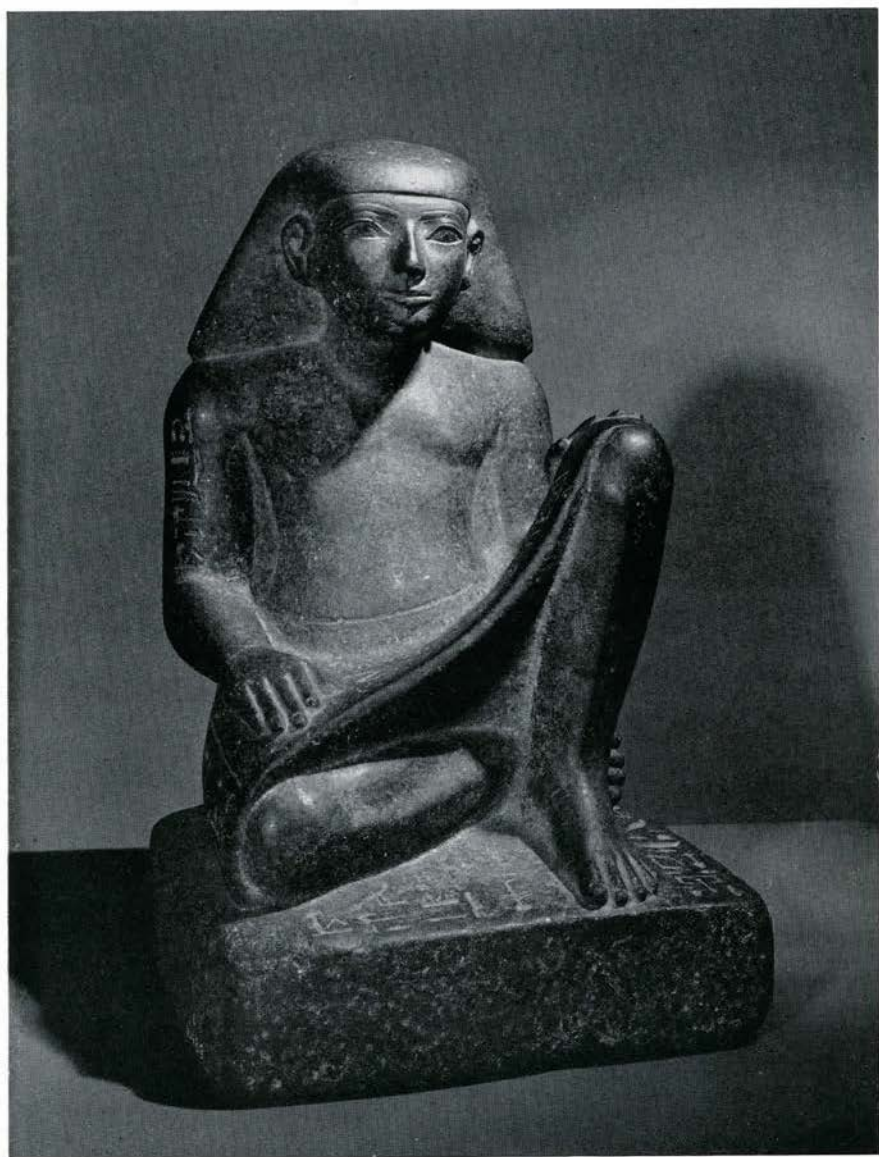


Fig. 1. Diorite statue of a scribe, Amenemhet. 18th dynasty. From the Museum's excavations at Buhen, Nubia.