

GANDHARA SCULPTURE

Among its more recent acquisitions, the Museum is fortunate in having a group of the Graeco-Buddhist sculpture found in the Northwest of India and known as Gandhara. It represents the Greek Invasion of India following Alexander's campaign in 328-324 B. C. The art of Greece took hold of the ideas and manners of Buddhism and in the district of Gandhara in the Northwest on the banks of the Indus near Peshawar established a School of Sculpture that reveals in its surviving examples the twofold influence under which it worked. In the five examples that follow, the characteristic form and style of the school will appear.

PLATE XX.

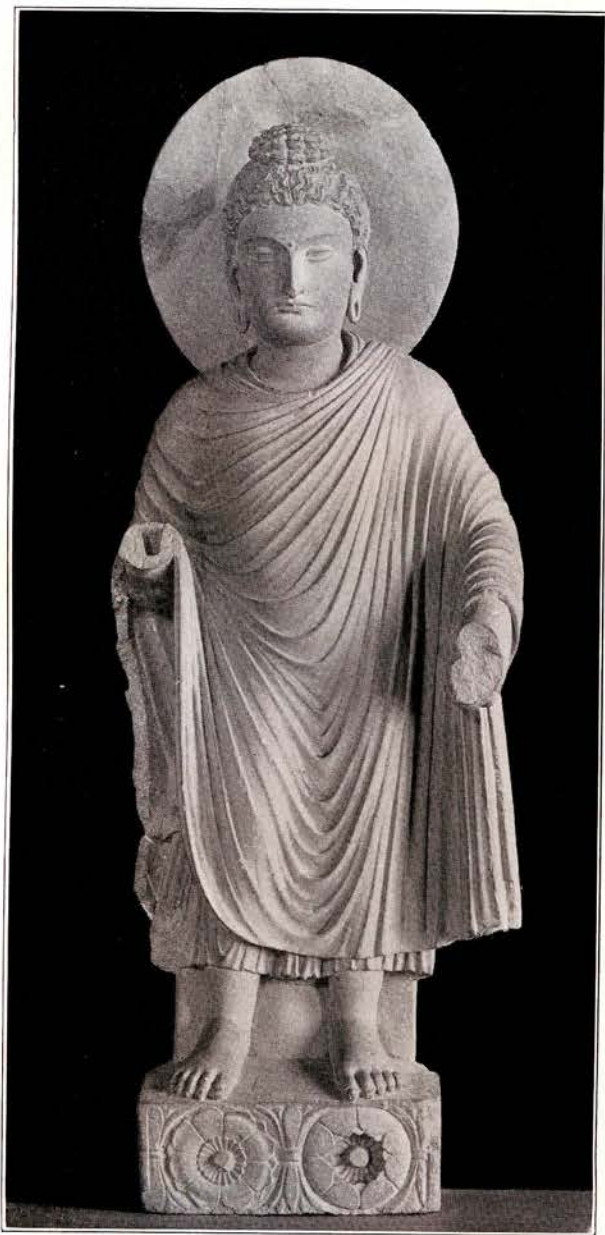


Figure of the Buddha. Gandhara.  
Height 32 inches.



Head of the Buddha. Gandhara.  
Height 9 inches.

PLATE XXII



Profile. Head of Buddha shown in Plate XXI.



PLATE XXIII



Head of the Buddha. Gandhara.

Height 16 inches.



Head of the Buddha. Gandhara.  
Height 20 inches.



PLATE XXV



Group of Sculpture, Gandhara.  
Size 6 x 11½ inches.